

Graphs

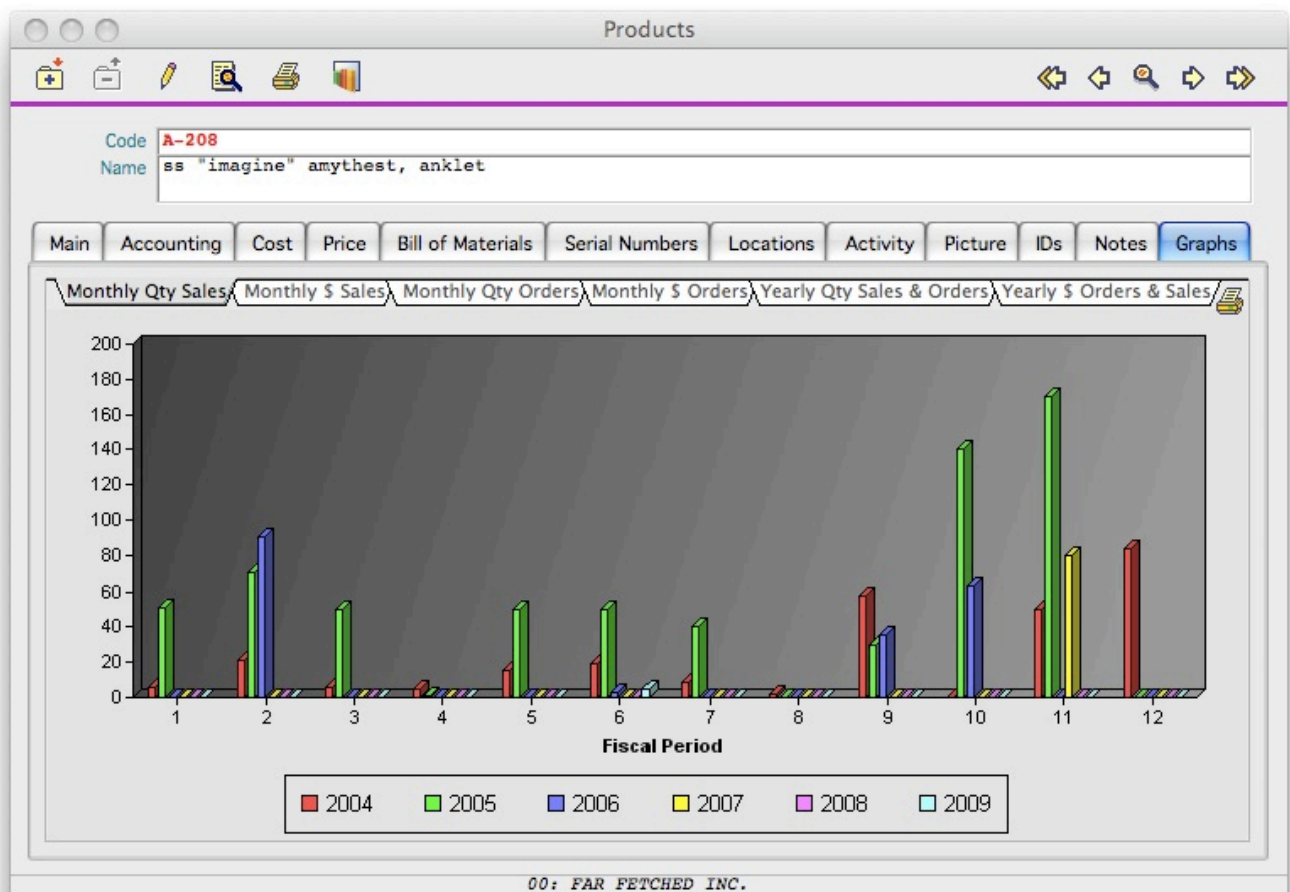
Graphs

Graphs are available in VisionX, either automatically generated by the program or calculated according to the user selection parameters.

The following windows offer Graphs capabilities

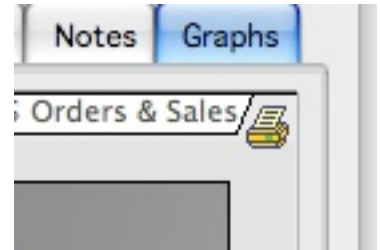
- General Ledger: Account Activity and Profit Center Activity.
- Accounts Payable: Vendors.
- Accounts Receivable: Customers and Reps.
- Inventory Control: Products.

Automatic graphs are displayed when selecting the Graphs tab. Both Monthly and Yearly summary data are represented for the selected record.



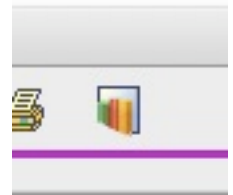
Graphs

Note the small Printer icon to the right of the sub-tab pane. It allows you to print a copy of the displayed graph to paper or to save it as a PDF file.



In addition to these automatic graphs that only display data from one single record VisionX also allows you to produce graphs combining data from a choice of multiple records.

Click on the Graph Icon at the top of the screen.



Depending of the type of record you are currently viewing an appropriate set of variables are presented to you.

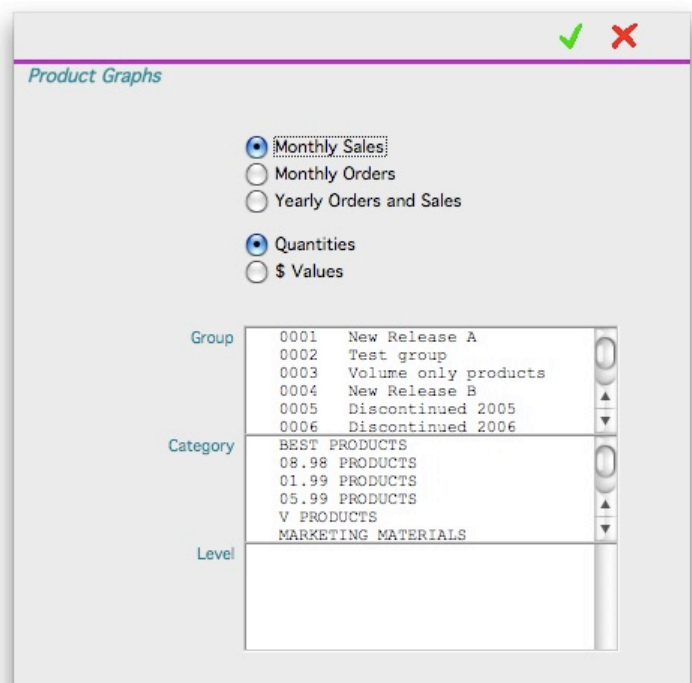
Click on the proper radio button selection.

If Lookup Files list are available you may elect to include all selections by leaving the list as it is, or to select one or several choices.

To select a list choice double-click on its line, an asterisk "*" symbol is displayed in front of each selected option. Double-clicking an already selected line will remove it from the selection.

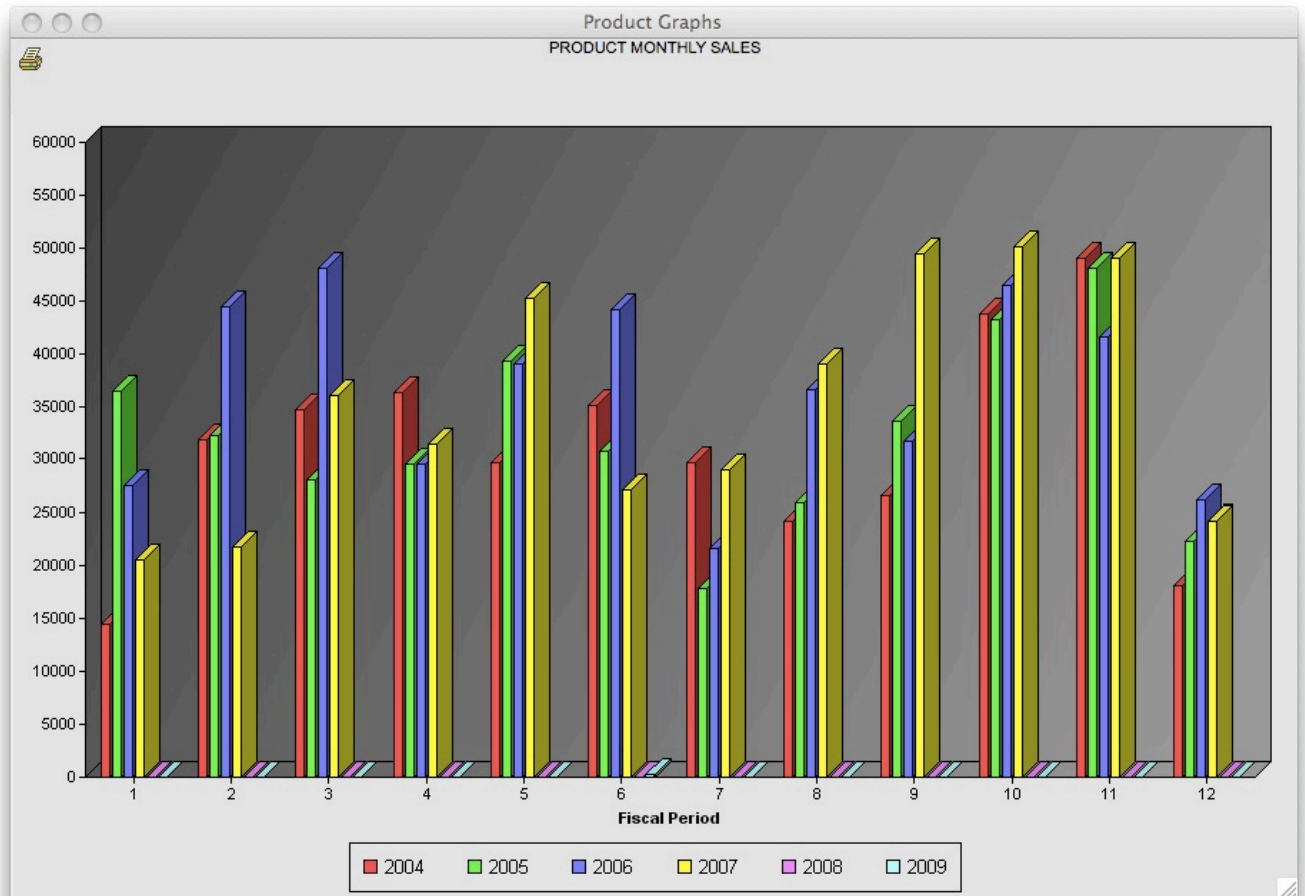
Click OK to start the process. If a large number of records has been selected the process may take as long as several minutes.

At the end a Graph window appears on your screen.



Graphs

SY-012
June 11, 2009



You may elect to send the graph to paper or to a PDF file by clicking on the small Print icon at the top left corner of the window.

When prompted for specify the destination the Graph has to be sent.

